



# SHRP-LTPP EASTERN WYOMING TEST SITE LOCATIONS

## General Pavement Studies and Specific Pavement Studies

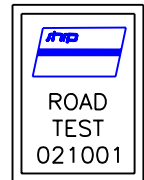
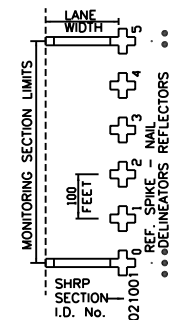


NICHOLS  
CONSULTING  
ENGINEERS, Chtd.



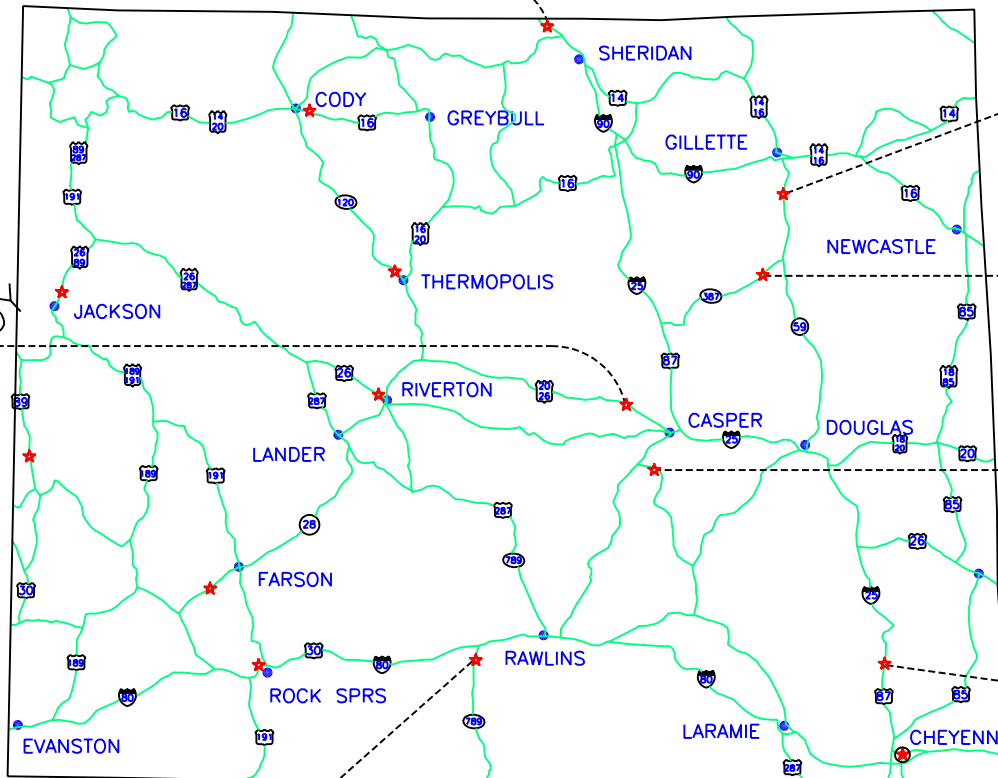
- CAPITAL CITY
- MAJOR CENTERS
- U.S. HIGHWAYS
- STATE HIGHWAY
- AGENCY BORDER

### TYPICAL SITE SIGNING & MARKING



EASTERN  
WYOMING

REVISED 11/29/05



562020 GPS 6S  
MON\_CAT G

I-90 MP: 6.08  
WESTBOUND

6.8 MILES

MO/WY STATE LINE

SHERIDAN

562019 GPS 6B  
MON\_CAT G

S.R. 59 MP: 103.03  
SOUTHBOUND

9.1 MILES

GILLETTE

562017 GPS 6B  
MON\_CAT G

MP: 136.10  
EASTBOUND

4.3 MILES

S.R. 387

TURNERCREST

567773 GPS 2  
MON\_CAT G

S.R. 487 MP: 67.4  
SOUTHBOUND

5.3 MILES

CASPER

562015 GPS 2  
MON\_CAT G

MP: 42.50  
NORTHBOUND

3.5 MILES

LITTLE BEAR COMMUNITY

CHEYENNE

562018 GPS 2  
MON\_CAT G

MP: 25.94  
WESTBOUND

0.22 MILES

U.S. 20

CULVERT & GAME

CASPER

562037 GPS 2  
MON\_CAT G

MP: 4.90  
SOUTHBOUND

4.9 MILES

S.R. 789

RAWLINS

OUT OF STUDY